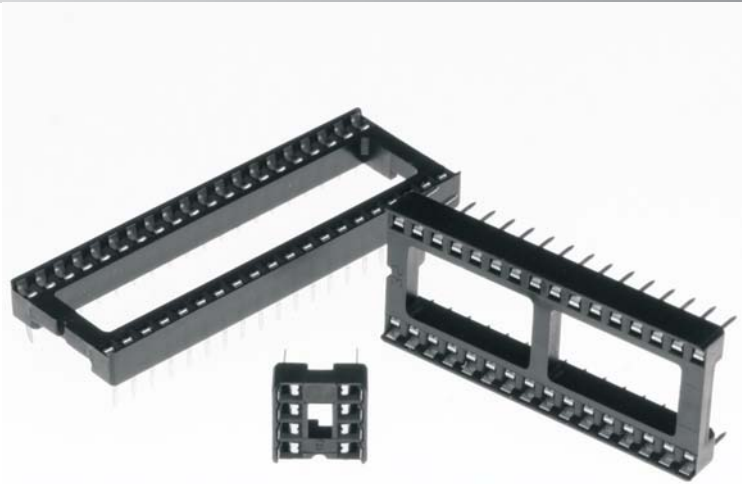


IC SOCKET 2.54mm SERIES



Material & finish

PIN CONTACT:

Brass
Gold plated

INSULATOR:

PBT & Glass-fibre
reinforced UL 94-V0

OPERATING TEMPERATURE:

-40°C to +105°C

CURRENT RATING:

3 Amp

CONTACT RESISTANCE:

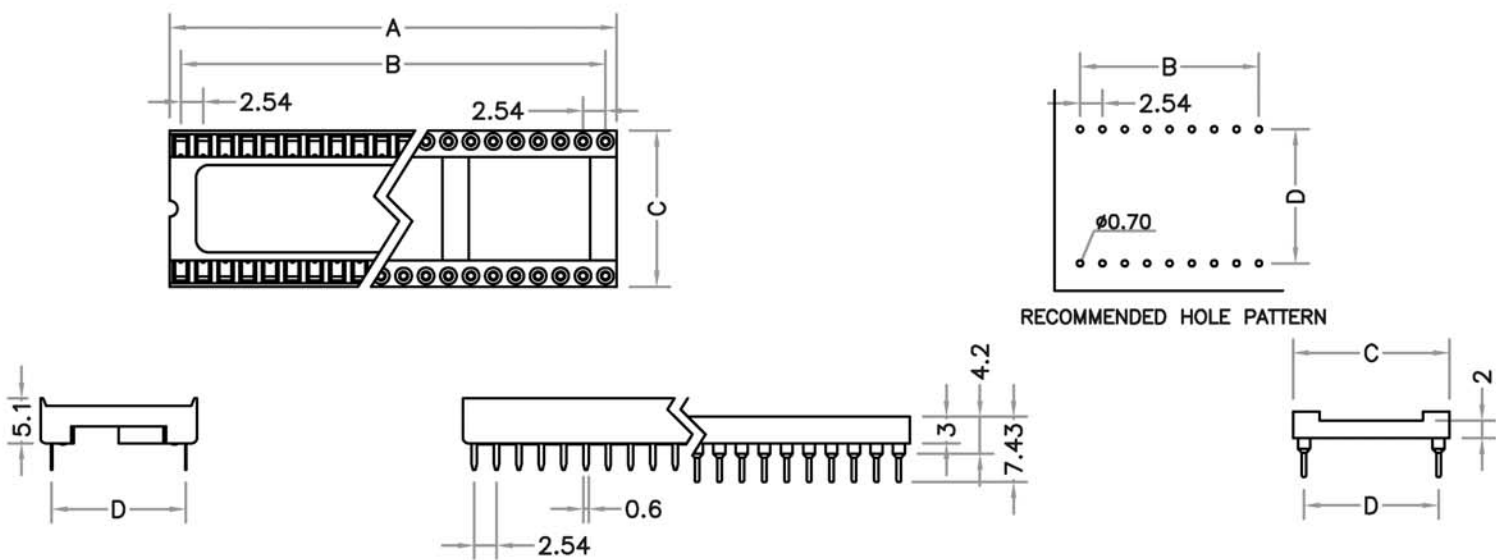
20 milliohms MAX.

INSULATOR RESISTANCE:

5000 Megohms Min.

VOLTAGE RATING:

250VAC. R.M.S.



2.54mm STAMPED PIN

2.54mm MACHINED PIN

PITCH=7.62mm (0.3")										
	6P	8P	14P	16P	18P	20P	22P	24P	28P	32P
A	5.08	7.62	15.24	17.78	20.32	22.86	25.40	27.94	33.02	38.10
B	7.52	10.06	17.68	20.05	22.76	25.26	27.80	30.30	35.48	40.58
C	9.94									
D	7.62									

PITCH=15.20mm (0.6")								
	24P	28P	32P	36P	38P	40P	42P	48P
A	27.94	33.02	38.10	43.18	45.72	48.26	50.80	58.42
B	30.38	35.46	40.58	45.55	48.16	50.70	53.27	60.96
C	17.60							
D	15.20							

ORDERING INFORMATION

IS1 - XX X K B X 0 0

TYPE

IS1: IC SOCKET 2.54mm

No. OF CONTACTS

06-48

TWO ROWS PITCH

A: 6.35mm(0.25inch)
B: 7.62mm(0.3inch)
C: 10.16mm(0.4inch)
D: 15.24mm(0.6inch)
E: 22.86mm(0.9inch)

CONTACT TYPE

A: STAMPED PIN
B: MACHINED PIN

CONTACT PLATING

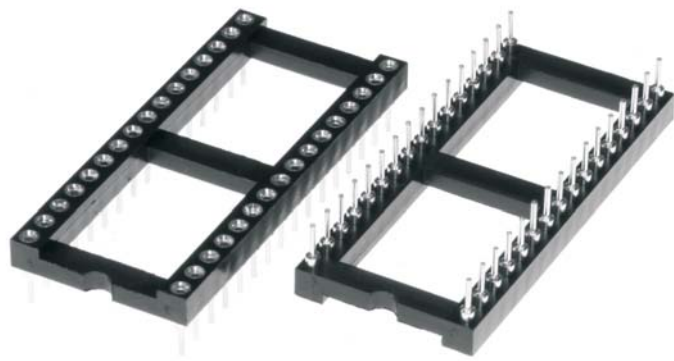
B: GOLD FLASH

INSULATOR COLOR

K: BLACK

IC SOCKET 1.778mm SERIES

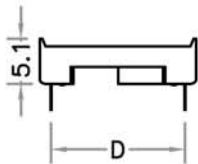
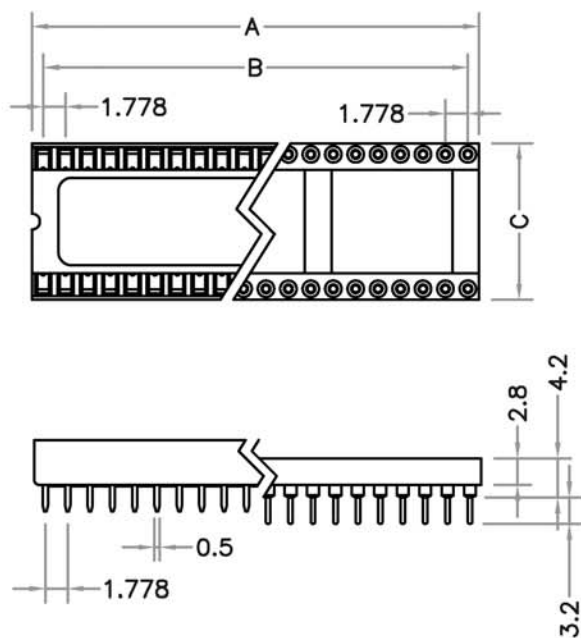
FU-YAO TECHNOLOGY CO., LTD.



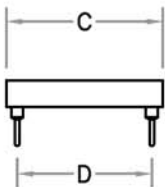
Material & finish

PIN CONTACT:
Brass
Gold plated
INSULATOR:
PBT & Glass-fibre reinforced UL 94-V0
OPERATING TEMPERATURE:
-40°C to +105°C

CURRENT RATING:
3 Amp
CONTACT RESISTANCE:
20 millohms MAX.
INSULATOR RESISTANCE:
5000 Megohms Min.
VOLTAGE RATING:
250VAC. R.M.S.

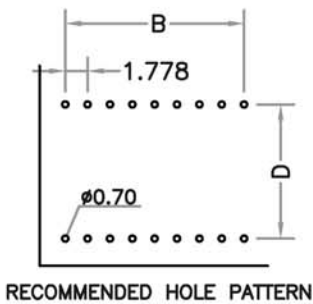


1.778mm STAMPED PIN



1.778mm MACHINED PIN

STAMPED PIN DIMENSION				
Position	A	B	C	D
16	14.22	12.45	10.10	7.62
20	17.78	16.00		
22	19.56	17.78		
24	21.34	19.56		
24	21.34	19.56	12.65	10.16
28	24.89	23.11		
30	26.67	24.89		
32	28.45	26.67		
40	35.56	33.78	17.70	15.24
42	37.34	35.56		
48	42.67	40.89		
52	46.23	44.45		
54	48.01	46.23	21.55	19.05
56	49.78	48.01		
64	56.90	55.12		



MACHINED PIN DIMENSION				
Position	A	B	C	D
16	14.60	12.45	10.16	7.62
28	25.20	23.11		
30	27.00	24.89		
32	28.80	26.67		
48	43.10	40.89	12.70	10.16
20	18.30	16.00		
24	21.55	19.56		
28	25.20	23.11		
40	35.90	33.78	17.78	15.24
42	37.70	35.56		
48	43.10	40.89		
52	46.60	44.45		
56	50.00	48.01	21.59	19.05
64	57.20	55.12		

ORDERING INFORMATION

IS2 - XX X K B X 0 0

