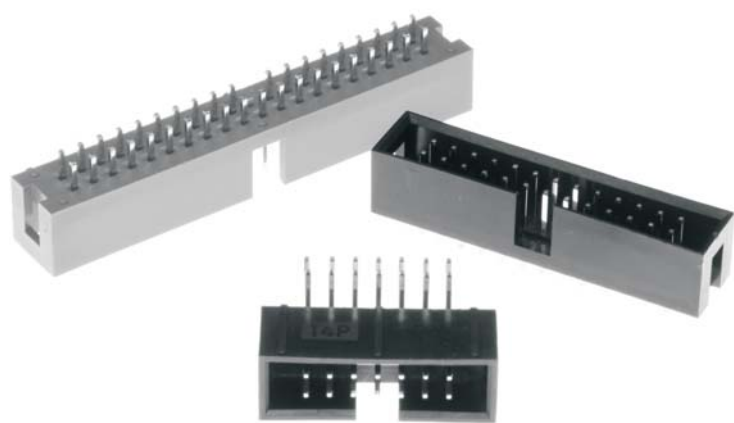


BOX HEADER 2.54*2.54mm SERIES



Material & finish

PIN CONTACT:

Brass
Gold plated

INSULATOR:

PBT & Glass-fibre
reinforced UL 94-V0

OPERATING TEMPERATURE:

-40°C to +105°C

CURRENT RATING:

3 Amp

CONTACT RESISTANCE:

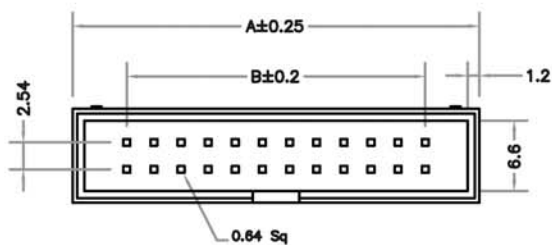
20 milliohms MAX.

INSULATOR RESISTANCE:

5000 Megohms Min.

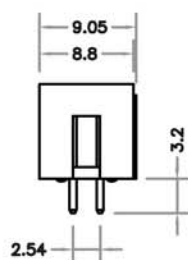
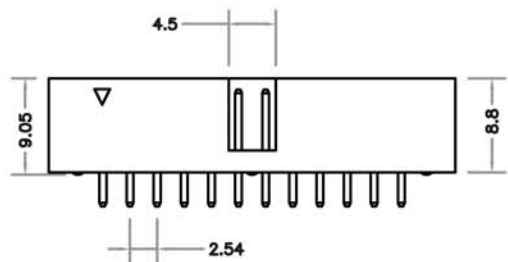
VOLTAGE RATING:

250VAC. R.M.S.

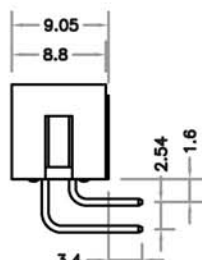


A:2.54 * No. of positions + 7.6

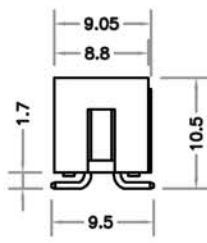
B:2.54 * (No. of positions - 1)



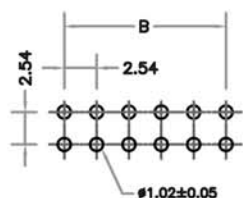
STRAIGHT



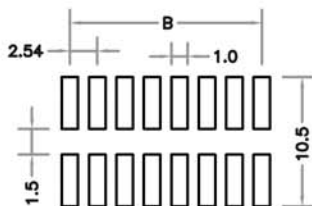
RIGHT ANGLE



SMT



DIP P. C. B. LAYOUT



SMT P. C. B. LAYOUT

ORDERING INFORMATION

BH1 - XX X K B X X 0 0

TYPE

BH1: 2.54mm*2.54mm

No. OF CONTACTS

10~64

LAYOUT TYPE

R: RIGHT ANGLE
S: STRAIGHT
M: SMT

INSULATOR COLOR

K: BLACK

P.C.B CONTACT LENGTH

F: 3.2mm
G: 3.4mm

SPECIAL FUNCTION

A: WITH BAR
B: WITHOUT BAR

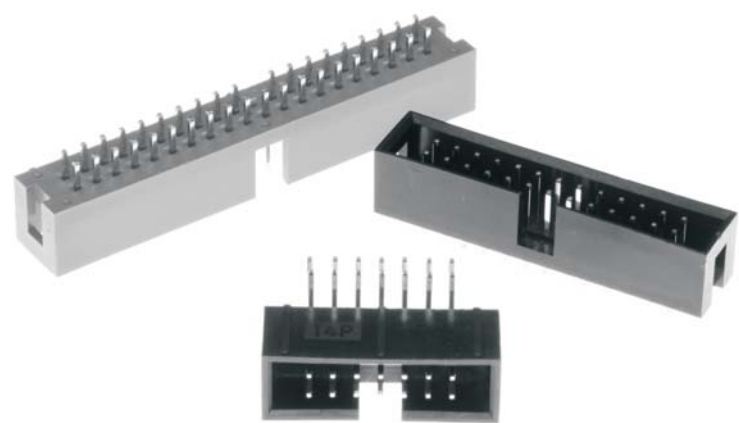
CONTACT PLATING

B: GOLD FLASH

Board to Board

BOX HEADER 2.0*2.0mm SERIES

FU-YAO TECHNOLOGY CO., LTD.



Material & finish

PIN CONTACT:

Brass
Gold plated

INSULATOR:

PBT & Glass-fibre
reinforced UL 94-V0

OPERATING TEMPERATURE:

-40°C to +105°C

CURRENT RATING:

3 Amp

CONTACT RESISTANCE:

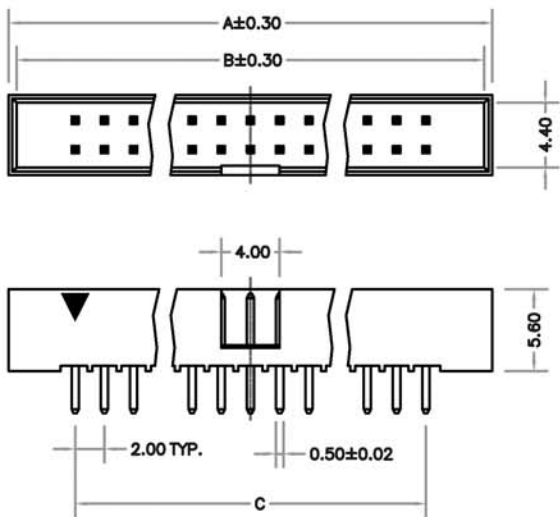
20 milliohms MAX.

INSULATOR RESISTANCE:

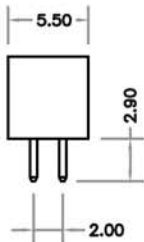
5000 Megohms Min.

VOLTAGE RATING:

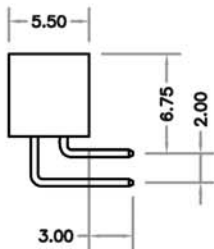
250VAC. R.M.S.



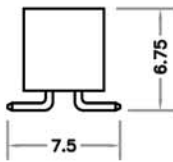
Number Of Position	DIMENSIONS		
	A	B	C
06	13.20	12.10	4.00
08	15.20	14.10	6.00
10	17.20	16.10	8.00
12	19.20	18.10	10.00
14	21.20	20.10	12.00
16	23.20	22.10	14.00
18	25.20	24.10	16.00
20	27.20	26.10	18.00
22	29.20	28.10	20.00
24	31.20	30.10	22.00
26	33.20	32.10	24.00
30	37.20	36.10	28.00
32	39.20	38.10	30.00
34	41.20	40.10	32.00
36	43.20	42.10	34.00
40	47.20	46.10	38.00
44	51.20	50.10	42.00
50	57.20	56.10	48.00
60	67.20	66.10	58.00
64	71.20	70.10	62.00
68	75.20	74.10	66.00



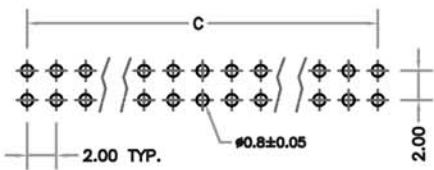
STRAIGHT



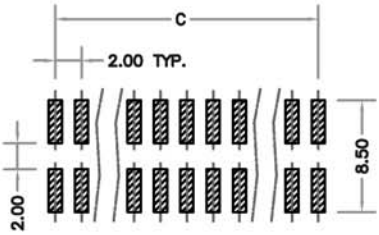
RIGHT ANGLE



SMT



DIP P. C. B. LAYOUT



SMT P. C. B. LAYOUT

ORDERING INFORMATION

BH2 - XX X K B X X 0 0

TYPE

BH2: 2.0mm*2.0mm

No. OF CONTACTS
06~68

LAYOUT TYPE
R: RIGHT ANGLE
S: STRAIGHT
M: SMT

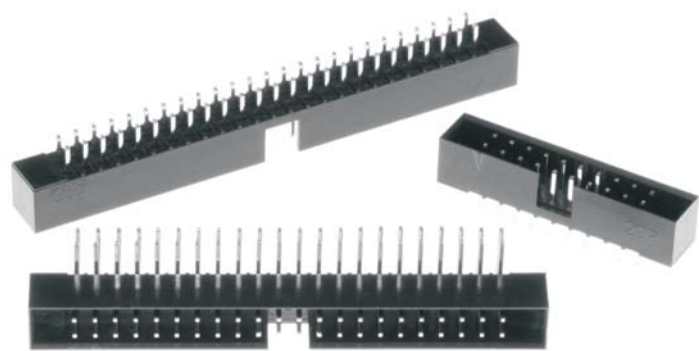
INSULATOR COLOR
K: BLACK

CONTACT PLATING
B: GOLD FLASH

P.C.B CONTACT LENGTH
D: 2.9mm
E: 3.0mm

SPECIAL FUNCTION
A: WITH BAR
B: WITHOUT BAR

BOX HEADER 1.27*1.27mm SERIES



Material & finish

PIN CONTACT:

Brass
Gold plated

INSULATOR:

PBT & Glass-fibre
reinforced UL 94-V0

OPERATING TEMPERATURE:

-40°C to +105°C

CURRENT RATING:

3 Amp

CONTACT RESISTANCE:

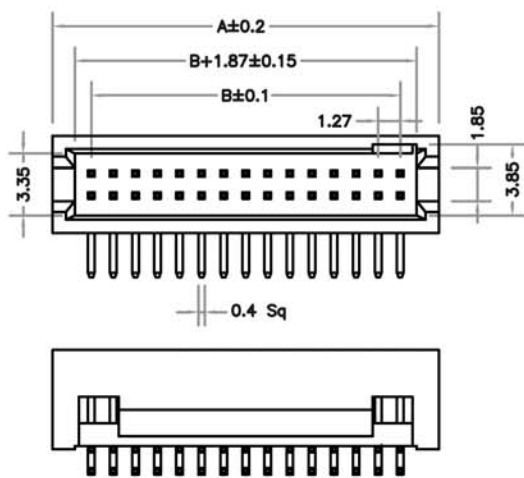
20 milliohms MAX.

INSULATOR RESISTANCE:

5000 Megohms Min.

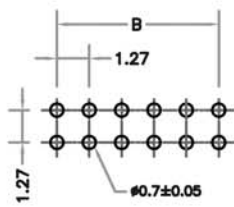
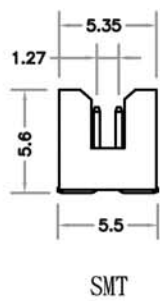
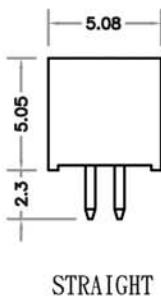
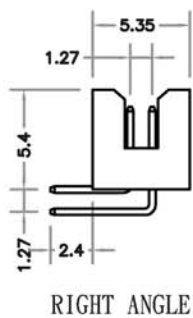
VOLTAGE RATING:

250VAC. R.M.S.

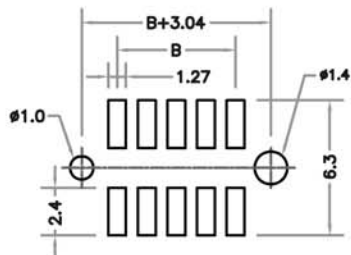


$$A = (\text{No. of Posotion Per Row}) \times 1.27 + 3.0$$

$$B = (\text{No. of Posotion Per Row} - 1) \times 1.27$$



DIP P. C. B. LAYOUT



SMT P. C. B. LAYOUT

ORDERING INFORMATION

BH4 - XX X K B X X 0 0

TYPE

BH4: 1.27mm*1.27mm

No. OF CONTACTS

06~100

LAYOUT TYPE

R: RIGHT ANGLE
S: STRAIGHT
M: SMT

INSULATOR COLOR

K: BLACK

CONTACT PLATING

B: GOLD FLASH

P.C.B CONTACT LENGTH

B: 2.3mm
C: 2.4mm

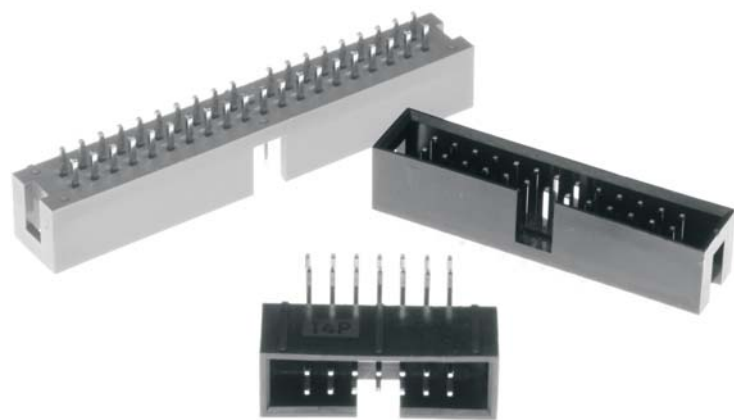
SPECIAL FUNCTION

A: WITH BAR
B: WITHOUT BAR

Board to Board

BOX HEADER 2.54*2.54mm I.D.C. FOR FLAT CABLE

FU-YAO TECHNOLOGY CO., LTD.



Material & finish

PIN CONTACT:

Brass
Gold plated

INSULATOR:

PBT & Glass-fibre
reinforced UL 94-V0

OPERATING TEMPERATURE:

-40°C to +105°C

CURRENT RATING:

3 Amp

CONTACT RESISTANCE:

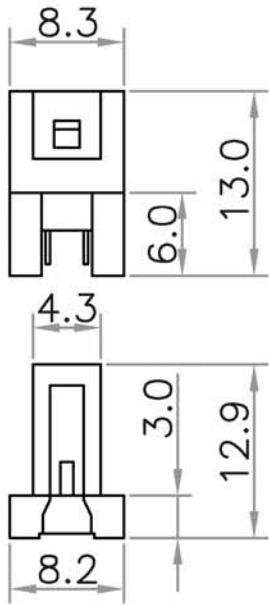
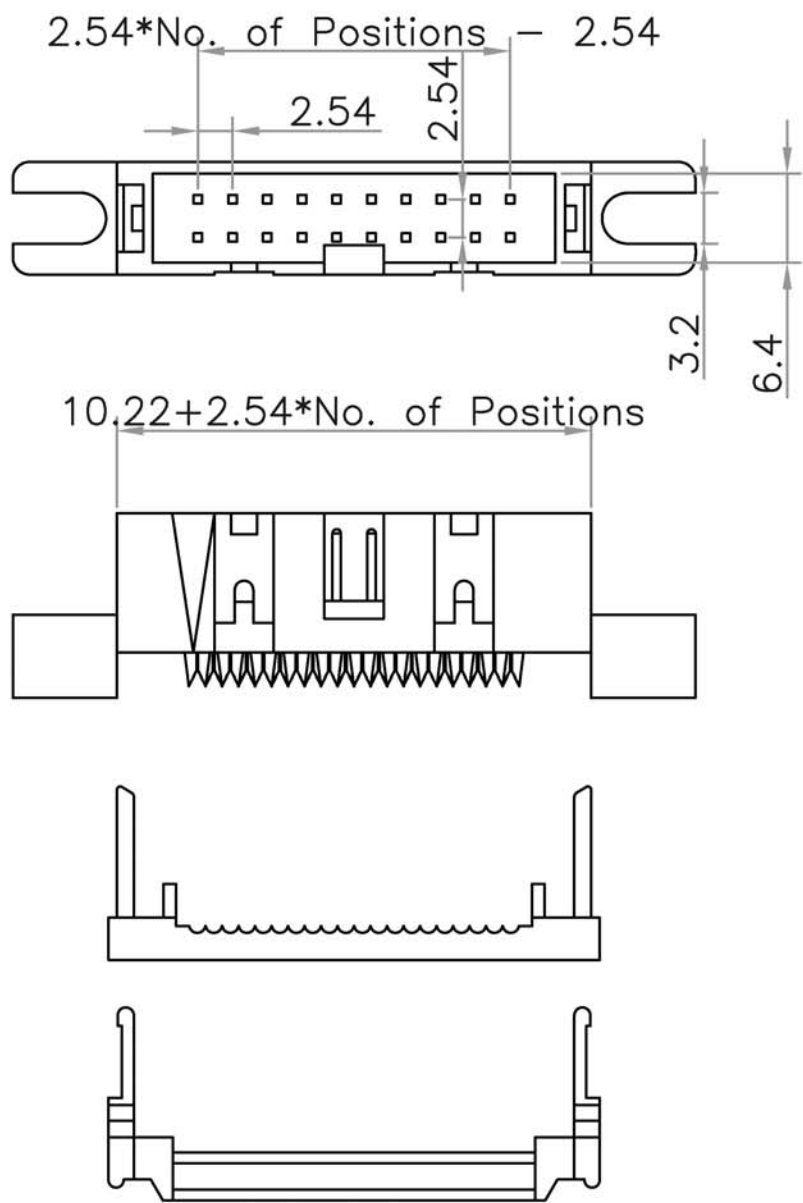
20 milliohms MAX.

INSULATOR RESISTANCE:

5000 Megohms Min.

VOLTAGE RATING:

250VAC. R.M.S.



ORDERING INFORMATION

BH1 - XX F K B X 0 0 0

TYPE

BH1: 2.54mm*2.54mm

No. OF CONTACTS

10~64

LAYOUT TYPE

F: IDC FLAT CABLE
TYPE

INSULATOR COLOR

K: BLACK

SPECIAL FUNCTION

A: WITH BAR
B: WITHOUT BAR

CONTACT PLATING

B: GOLD FLASH