

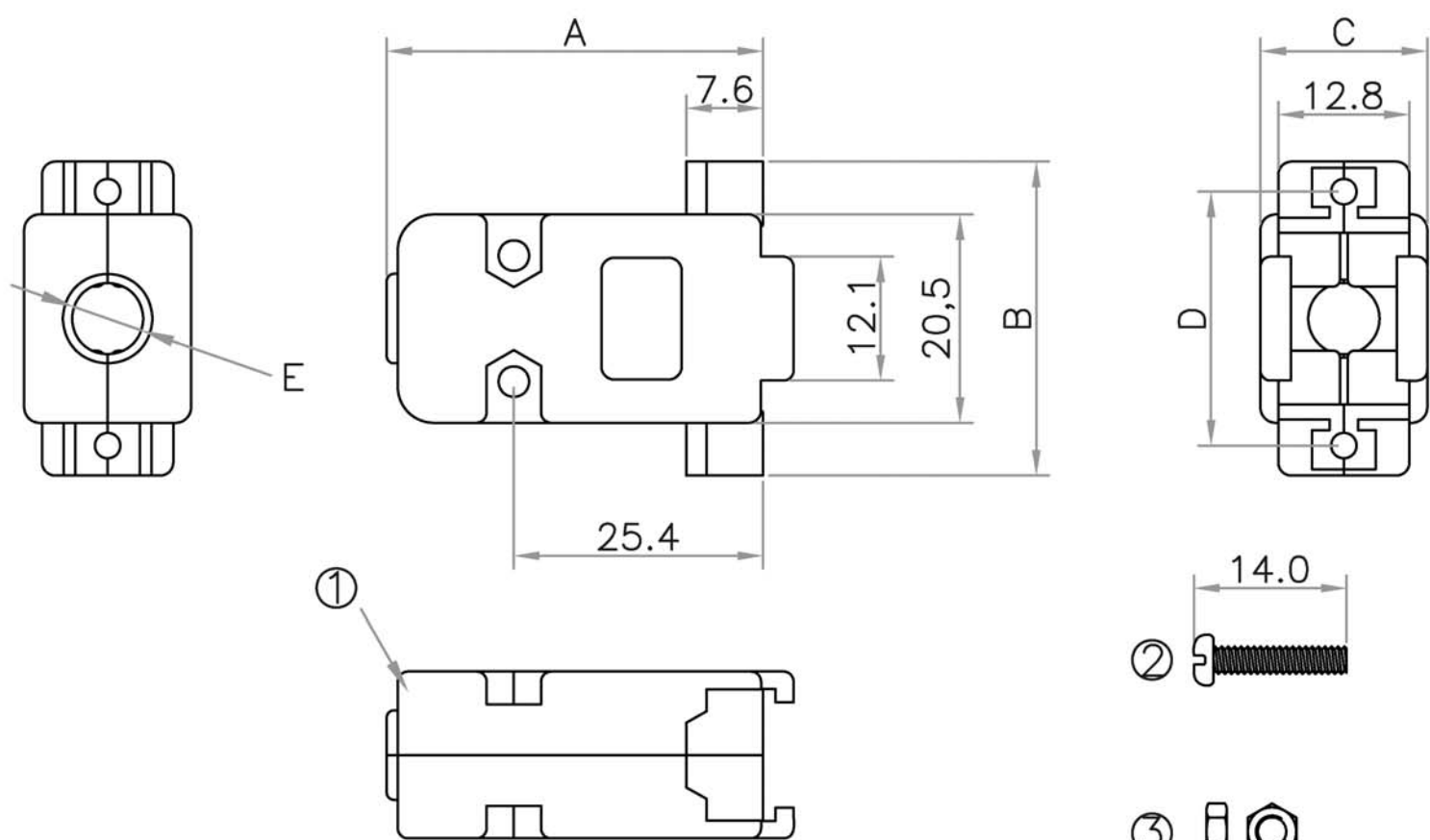
PLASTIC COVER FOR D-SUB



Material & finish

SHELL:
CRS/Polyester
SCREW & NUT & WASHER:
Iron
Nickel plated

D-SUB



Positions	A	B	C	D	E
09	37.1	30.9	16.4	25.0	7.0
15	34.6	39.7	17.4	33.3	9.8
25	40.8	55.0	16.6	47.0	11.0
37	48.8	69.0	24.0	63.5	13.8
50	41.0	69.5	19.2	61.4	14.0

NO.	PARTS DESCRIPTION
1.	HOOD, PLASTIC
2.	SCREW, WITH #4-40 UNC THREAD, A PAIR
3.	NUT, WITH #4-40 UNC THREAD, A PAIR
4.	SCREW, A PAIR, THREAD WITH
5.	STRAIN RELIEF
6.	SCREW, A PAIR, THREAD WITH UNC #4-40 or M3x0.5 or M2.6x0.45

