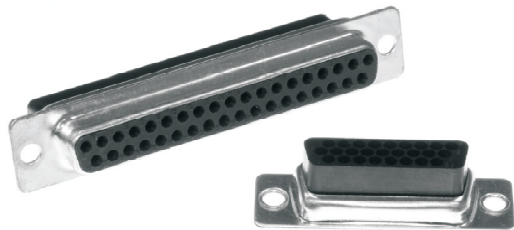


D-SUB CRIMP TYPE HOUSING

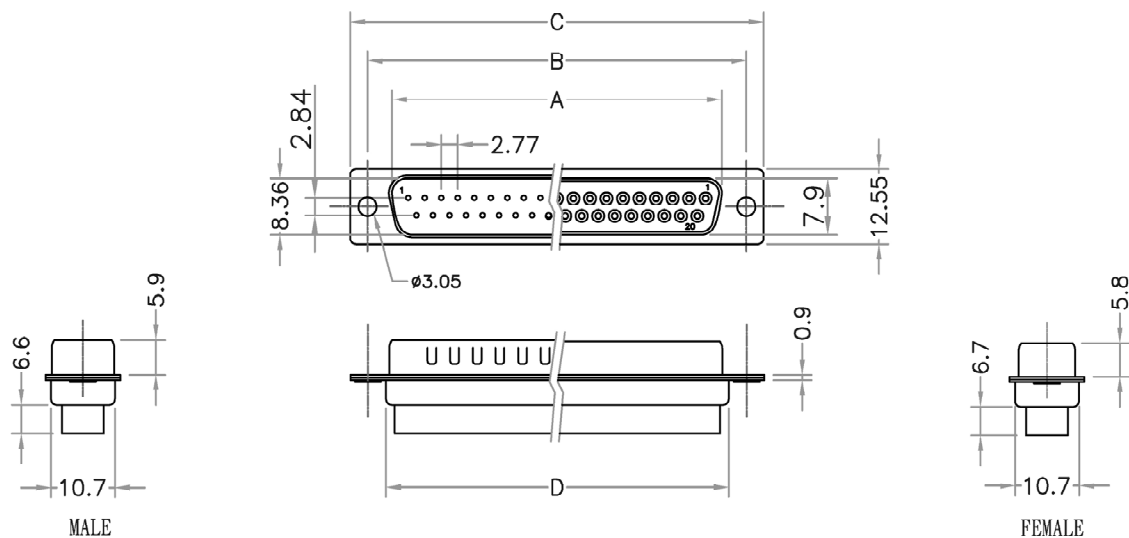
FU-YAO TECHNOLOGY CO., LTD.



Material & finish

SHELL:
Steel
Nickel plated steel
PIN CONTACT:
Phosphor bronze
Gold plated
INSULATOR:
PBT & Glass-fibre
reinforced UL 94-V0

CURRENT RATING:
5 Amp
DIELECTRIC STRENGTH:
1000V for one minute
INSULATOR RESISTANCE:
1000M Ω Min.(at 500V DC)
TEMPERATURE:
-55°C to +105°C



MALE

	A	B	C	D
09	16.92	24.99	30.81	19.28
15	25.25	33.32	39.14	27.65
25	38.96	47.04	53.04	41.30
37	55.42	63.50	69.32	57.44

FEMALE

	A	B	C	D
09	16.33	24.99	30.81	19.28
15	24.66	33.32	39.14	27.65
25	38.38	47.04	53.04	41.30
37	54.84	63.50	69.32	57.44

ORDERING INFORMATION

DH - XX X K X X X 0 0

TYPE
DH: D-SUB CRIMP

No. OF CONTACTS
09
15
25
37

CONTACT TYPE
P: PLUG
S: SOCKET

INSULATOR COLOR
K: BLACK

SHELL PLATING
B: TIN
C: NICKEL FRONT & TIN BACK

SPECIAL FUNCTION
A: BACK RIVET 3.0mm HEX
B: BACK RIVET 4.0mm HEX
C: BACK RIVET 5.8mm HEX

SPECIAL FUNCTION
A: FRONT RIVET 3.0mm HEX
B: FRONT RIVET 4.0mm HEX
C: FRONT RIVET 5.8mm HEX