

REV	DATE	DESCRIPTION
B	01/27/'03	

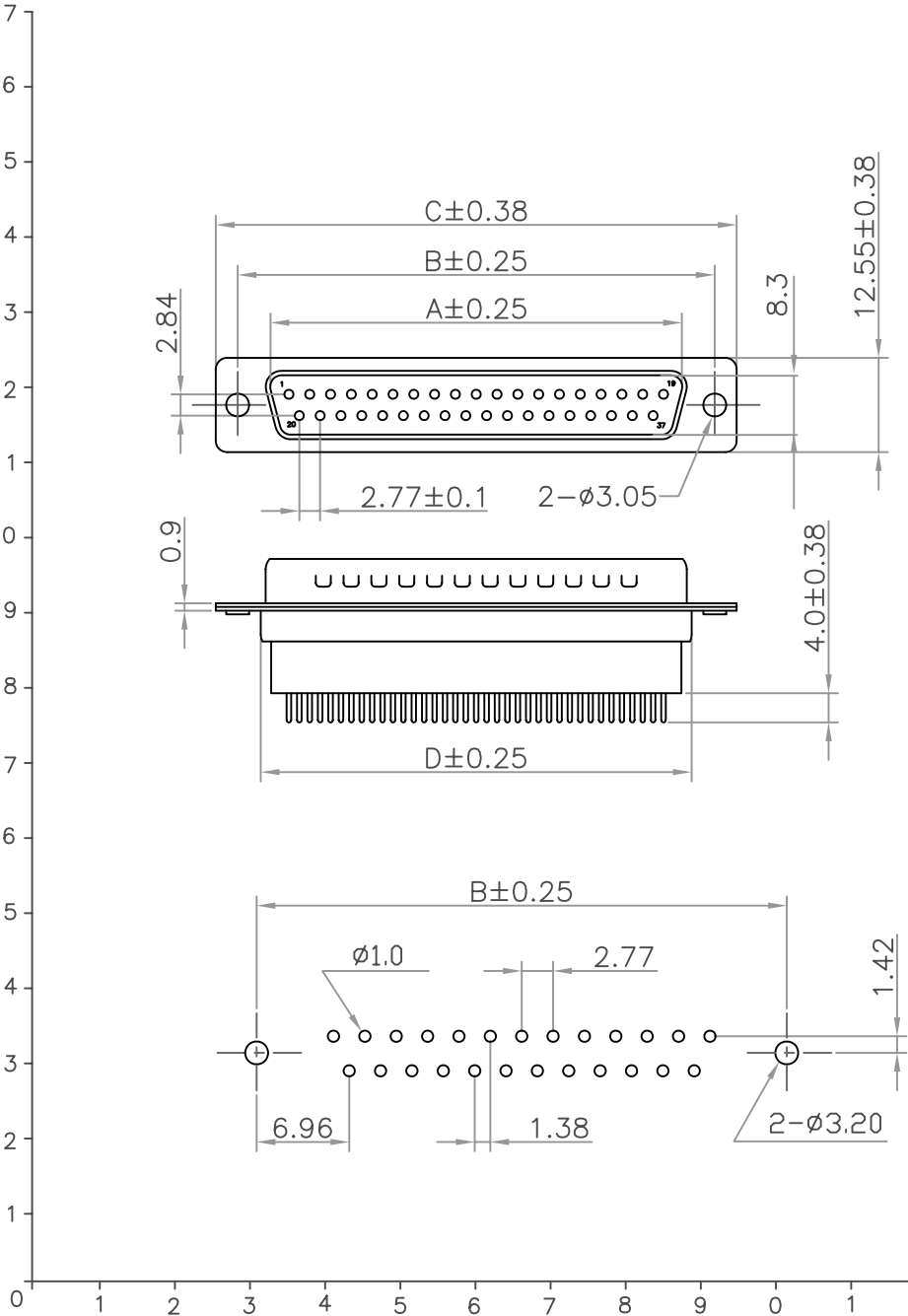
Material & Finish

- SHELL:
- Steel
- Zinc plated, Tin plated
- or Nickel plated steel
- PIN CONTACT:
- Phosphor bronze or brass
- Gold plated
- INSULATOR:
- PBT & Glass-fibre reinforced
- UL-94-V0
- NUMBER OF CONTACT:
- 9,15,25,37
- CURRENT RATING:
- 5 Amp
- DIELECTRIC STRENGTH:
- AC 1000V Min. (for one minute)
- INSULATOR RESISTANCE:
- 1000MΩ Min. (at 500V DC)
- CONTACT RESISTANCE
- 10mΩ Max. mated
- TEMPERATURE:
- 55°C to +105°C

Positions

	A	B	C	D
09	16.92	24.99	30.81	19.28
15	25.25	33.32	39.14	27.51
25	38.96	47.04	53.04	41.30
37	55.42	63.50	69.32	57.44

UNIT : mm



FU-YAO TECHNOLOGY CO., LTD. 復堯科技股份有限公司	MODEL NAME:	SELECT				PART NO. DS3-xxPKxxA			
	D-SUB P.C.B. HIGH PROFILE STRAIGHT TYPE MALE	DIM	1	2	3	EXTRA	APPROVED BY:	FILE NO. FIG01166	
		TOL	0.000	0.05	0.05	0.10			
			0.00	0.10	0.15	0.20	✓	CHECKED BY:	SCALE: FREE
			0.0	0.15	0.25	0.30	✓		
			0.	0.25	0.30	0.40	✓	DRAW BY: KAO	DATE : 910517
ANGLE	1.0°	3.0°	5.0°	✓					

REV	DATE	DESCRIPTION
B	01/27/'03	
C	06/19/'06	CHANGE DIMENSION

Material & Finish

SHELL:

Steel
Zinc plated, Tin plated
or Nickel plated steel

PIN CONTACT:

Phosphor bronze or brass
Gold plated

INSULATOR:

PBT & Glass-fibre reinforced
UL-94-V0

NUMBER OF CONTACT:

9,15,25,37

CURRENT RATING:

5 Amp

DIELECTRIC STRENGTH:

AC 1000V Min. (for one minute)

INSULATOR RESISTANCE:

1000MΩ Min. (at 500V DC)

CONTACT RESISTANCE

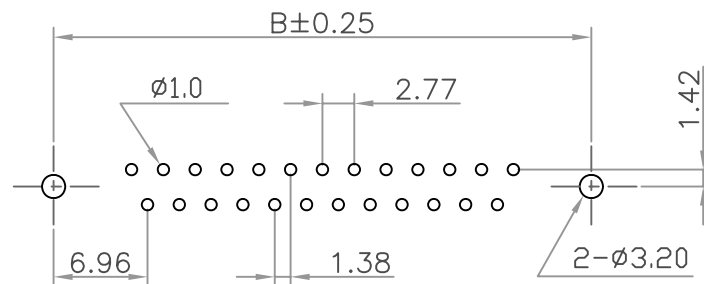
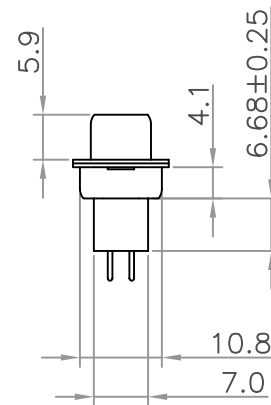
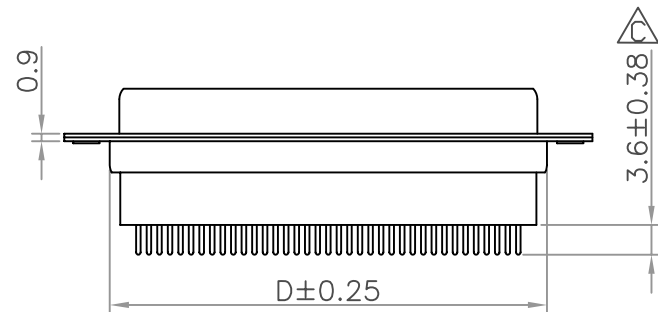
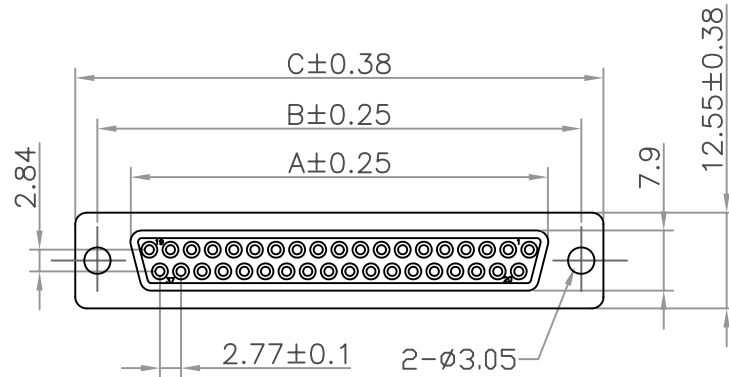
10mΩ Max. mated

TEMPERATURE:

-55°C to +105°C

Positions	A	B	C	D
09	16.33	24.99	30.81	19.28
15	24.66	33.32	39.14	27.65
25	38.38	47.04	53.04	41.03
37	54.84	63.50	69.32	57.44

UNIT : mm



FU-YAO TECHNOLOGY CO., LTD.

復堯科技股份有限公司

MODEL NAME:

D-SUB P.C.B. HIGH PROFILE
STRAIGHT FEMALE

SELECT	1	2	3	EXTRA
DIM TOL	0.000	0.05	0.05	0.10
	0.00	0.10	0.15	0.20
	0.0	0.15	0.25	0.30
	0.	0.25	0.30	0.40
ANGLE	1.0°	3.0°	5.0°	

PART NO. DS3-xxSKxxA

APPROVED BY:

CHECKED BY:

DRAW BY:

KAO

FILE NO. FIG01165

SCALE: FREE

DATE : 910517