

REV	DATE	DESCRIPTION
B	12/30/'02	

## Material & Finish

### SHELL:

Steel  
Zinc plated, Tin plated  
or Nickel plated steel

### PIN CONTACT:

Phosphor bronze or brass  
Gold plated

### INSULATOR:

PBT & Glass-fibre reinforced  
UL 94V-0

### NUMBER OF CONTACT:

15,26,44,62

### CURRENT RATING:

5 Amp

### DIELECTRIC STRENGTH:

AC 1000V Min. (for one minute)

### INSULATOR RESISTANCE:

500M $\Omega$  Min. (at 500V DC)

### CONTACT RESISTANCE

15m $\Omega$  Max. mated

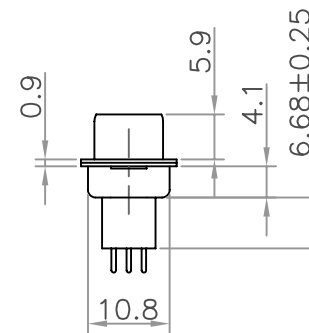
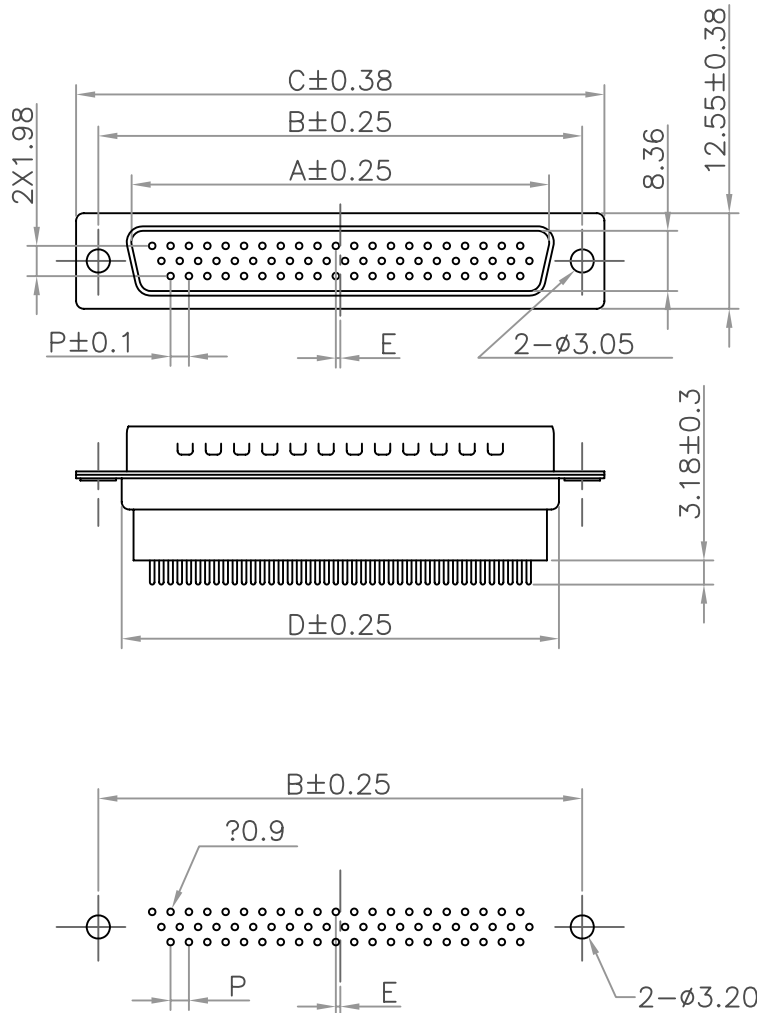
### TEMPERATURE:

-55° C to +105° C

### Positions

	A	B	C	D	E	P
15	16.92	24.99	30.81	19.28	0.25	2.29
26	25.25	33.32	39.14	27.65	0.51	2.29
44	38.96	47.04	53.04	41.30	0.51	2.29
62	55.42	63.50	69.32	57.44	0.58	2.41

UNIT : mm



FU-YAO TECHNOLOGY CO., LTD.

復堯科技股份有限公司

MODEL NAME:

D-SUB P.C.B. HIGH DENSITY  
STRAIGHT HIGH PROFILE MALE

SELECT	1	2	3	EXTRA
DIM TOL	0.05	0.05	0.10	
0.00	0.10	0.15	0.20	✓
0.0	0.15	0.25	0.30	✓
0.	0.25	0.30	0.40	✓
ANGLE	1.0°	3.0°	5.0°	✓

PART NO. HS3-xxPKxxA

APPROVED BY: FILE NO. FIG00185

CHECKED BY: SCALE: FREE

DRAW BY: DATE : 851026

REV	DATE	DESCRIPTION
A	03/16/'96	

## Material & Finish

### SHELL:

Steel  
Zinc plated, Tin plated  
or Nickel plated steel

### PIN CONTACT:

Phosphor bronze or brass

### INSULATOR:

PBT & Glass-fibre reinforced  
UL 94V-0

### NUMBER OF CONTACT:

15,26,44,62

### DURABILITY

100 cycles

### CURRENT RATING:

5 Amp

### DIELECTRIC STRENGTH:

AC 1000V Min. (for one minute)

### INSULATOR RESISTANCE:

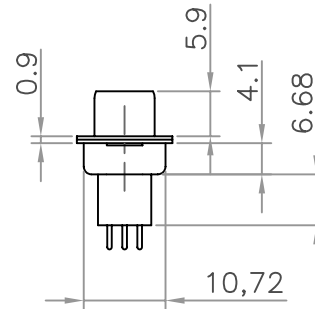
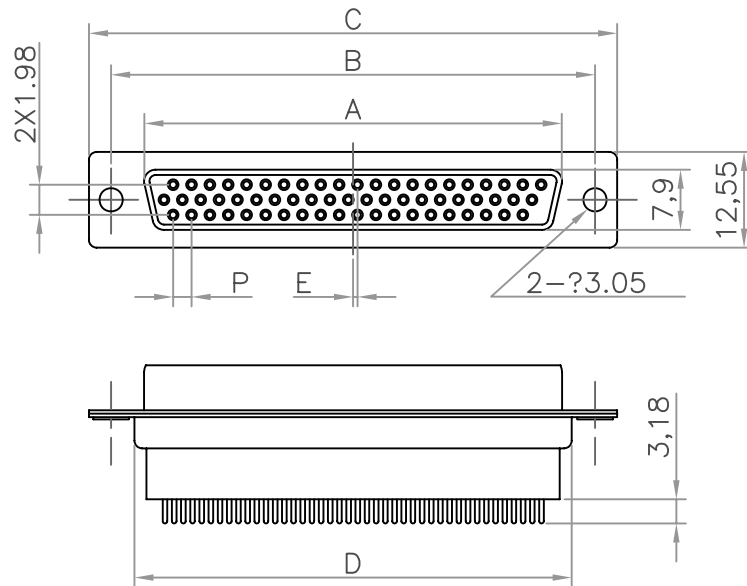
500M $\Omega$  Min. (at 500V DC)

### CONTACT RESISTANCE

15m $\Omega$  Max. mated

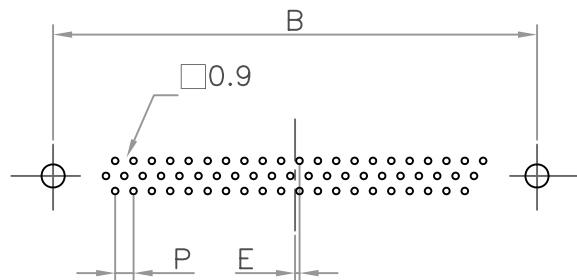
### TEMPERATURE:

-55°C to +105°C



Positions

	A	B	C	D	E	P
15	16.33	24.99	30.81	19.28	0.25	2.29
26	24.66	33.32	39.14	27.65	0.51	2.29
44	38.38	47.04	53.04	41.30	0.51	2.29
62	54.84	63.50	69.32	57.44	0.58	2.41



UNIT : mm

FU-YAO TECHNOLOGY CO., LTD.

復堯科技股份有限公司

MODEL NAME:

D-SUB HIGH DENSITY P.C.B.  
STRAIGHT HIGH PROFILE  
FEMALE

SELECT	1	2	3	EXTRA
DIM TOL	0.05	0.10	0.15	0.20
0.00	0.05	0.10	0.15	0.20
0.00	0.10	0.15	0.20	0.25
0.0	0.15	0.20	0.25	0.30
0.	0.20	0.25	0.30	0.35
ANGLE	1.0°	3.0°	5.0°	7.0°

PART NO. HS3-xxSKxxA

APPROVED BY:

FILE NO. FIG00141

CHECKED BY:

SCALE: FREE

DRAW BY:

DATE : 850316