

RS SERIES

RoHS COMPLIANT

FU-YAO
TECHNOLOGY CO., LTD.



RS1
Male Straight DIP PCB TYPE



RS2
Female Straight DIP PCB TYPE



RS9
Male Straight DIP PCB TYPE



RS4
Female Straight DIP PCB TYPE



RS6
Female Straight DIP PCB TYPE

MATERIAL & FINISHES

Insulator	PBT Glass-Fibre reinforced, UL94V-0 Rated
Contact	Phosphor Bronze - Contact area: Au over Ni Plating
	Tail Area: Sn over Ni Plating
Shell	Steel - Ni over Cu Plating
Screw Nut	Copper Alloy - Ni Plating
Screw	Steel - Ni over Cu Plating
Board Lock	Copper Alloy - Ni Plating
Hexagon Screw Nut	Copper Alloy - Ni Plating

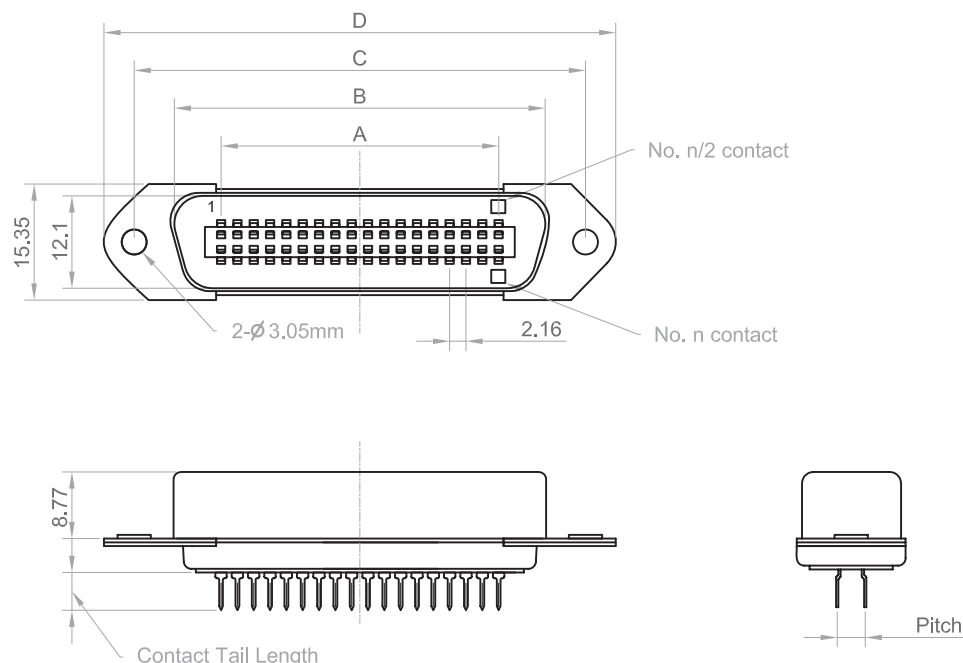
SPECIFICATIONS

Rated Voltage	500V AC (r.m.s.)
Rated Current	3AMP
Dielectric Withstanding Voltage	1000V AC (r.m.s.) for one mintue
Insulation Resistance	1000M Ω (min) at 500V DC
Contact Resistance	35m Ω (max)
Operating Temperature	-55°C ~ 105°C

MALE PCB DIP STRAIGHT TYPE

RoHS COMPLIANT

FU-YAO
TECHNOLOGY CO., LTD.



Unit : mm

Part number	contacts	A	B	C	D
RS1-14PB□A□0000	14	12.96	25.6	36.0	43.9
RS1-24PB□A□0000	24	23.76	36.3	46.8	54.7
RS1-36PB□A□0000	36	36.72	49.3	59.7	67.7
RS1-50PB□A□0000	50	51.84	64.4	74.9	82.8

R S 1 - 3 6 P B A A A 0 0 0 0

Number of Contact

14 . 24 . 36 . 50

Mating style

P: Plug / Male

Insulator Color

B: Blue (Standard)
K: Black

Contact Au Plating

A: Contact area Au(Flash) over Ni plating (Standard)
E: Contact area Au(15 μ in) over Ni plating
F: Contact area Au(30 μ in) over Ni plating

Back option

0: ψ 3.05mm (Standard)
A: Rivet 4.8mm Boardlock
H: Rivet 4.0mm Nut (M3)
E: Rivet 4.0mm Nut (#4-40)
F: Rivet 3.0mm Nut (#4-40)

Front option

0: ψ 3.05mm (Standard)
A: With 4.8mm Hex (#4-40)
B: Rivet 5.8mm Hex (#4-40)
D: Rivet 3.0mm Nut (#4-40)

Contact Tail Length

A: 5.0mm-Pitch 3.9mm (Standard)
D: 4.3mm-Pitch 4.2mm (Standard)

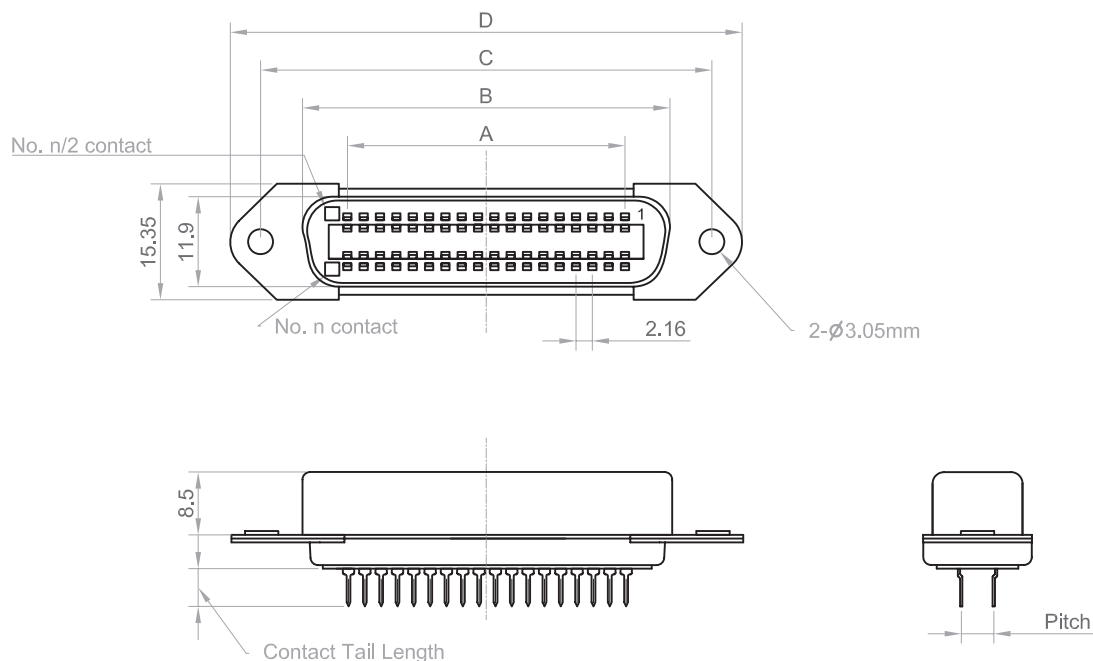
Shell Plating

A: Ni over Copper (Standard)

FEMALE PCB DIP STRAIGHT TYPE

RoHS COMPLIANT

FU-YAO
TECHNOLOGY CO., LTD.



Unit : mm

Part number	contacts	A	B	C	D
RS2-14SB□A□0000	14	12.96	25.2	36.0	43.9
RS2-24SB□A□0000	24	23.76	36.0	46.8	54.7
RS2-36SB□A□0000	36	36.72	48.9	59.7	67.7
RS2-50SB□A□0000	50	51.84	64.1	74.9	82.8

R S 2 - 3 6 S B A A A 0 0 0 0

Number of Contact

14 . 24 . 36 . 50

Mating style

S: Receptacle / Female

Insulator Color

B: Blue (Standard)
K: Black

Contact Au Plating

A: Contact area Au(Flash) over Ni plating (Standard)
E: Contact area Au(15 μ in) over Ni plating
F: Contact area Au(30 μ in) over Ni plating

Back option

0: ψ 3.05mm (Standard)
A: Rivet 4.8mm Boardlock
H: Rivet 4.0mm Nut (M3)
E: Rivet 4.0mm Nut (#4-40)
F: Rivet 3.0mm Nut (#4-40)

Front option

0: ψ 3.05mm (Standard)
A: With 4.8mm Hex (#4-40)
B: Rivet 5.8mm Hex (#4-40)
D: Rivet 3.0mm Nut (#4-40)

Contact Tail Length

A: 5.0mm-Pitch 4.3mm (Standard)
D: 4.3mm-Pitch 4.2mm (Standard)

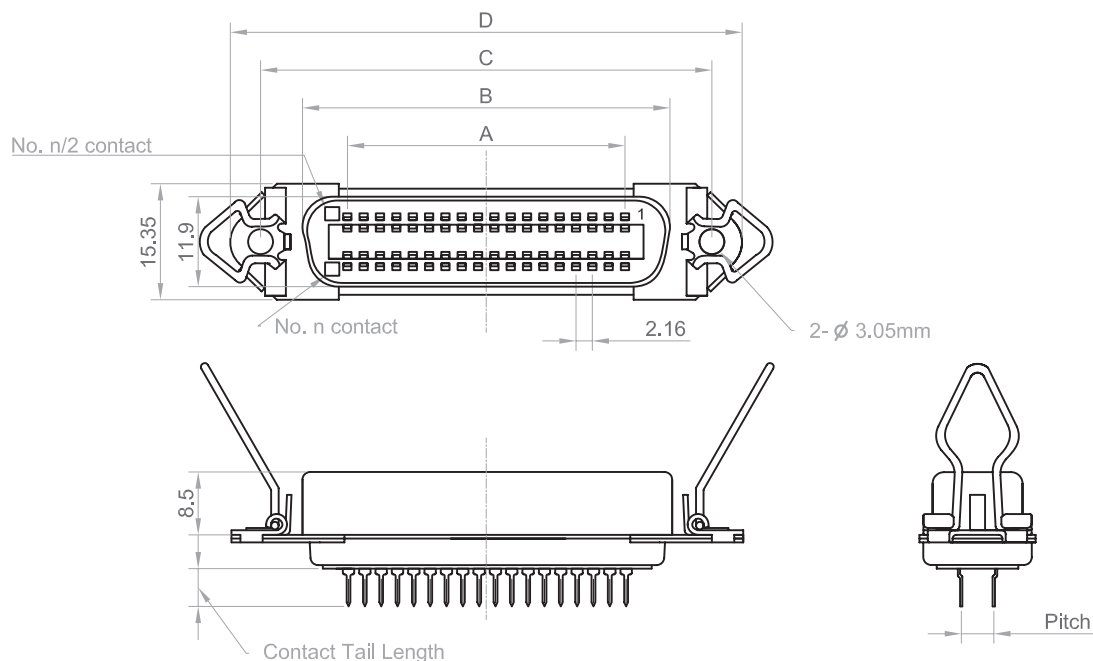
Shell Plating

A: Ni over Copper (Standard)

FEMALE PCB DIP LATCH TYPE

RoHS COMPLIANT

FU-YAO
TECHNOLOGY CO., LTD.



Unit : mm

Part number	contacts	A	B	C	D
RS4-14SB□A□2000	14	12.96	25.2	36.0	43.9
RS4-24SB□A□2000	24	23.76	36.0	46.8	54.7
RS4-36SB□A□2000	36	36.72	48.9	59.7	67.9
RS4-50SB□A□2000	50	51.84	64.1	74.9	83.0

R S 4 - 3 6 S B A A A 2 0 0 0

Number of Contact

14 . 24 . 36 . 50

Mating style

S: Receptacle / Female

Insulator Color

B: Blue (Standard)
K: Black

Contact Au Plating

A: Contact area Au(Flash) over Ni plating (Standard)
E: Contact area Au(15 μ in) over Ni plating
F: Contact area Au(30 μ in) over Ni plating

Back option

0: \varnothing 3.05mm (Standard)
A: Rivet 4.8mm Boardlock
E: Rivet 4.0mm Hexagon Nut (#4-40)
F: Rivet 3.0mm Hexagon Nut (#4-40)
M: Rivet 2.0mm Round Nut (#4-40)

Spring Latch type

2: With (tradition) Spring Latch (Standard)
3: Without (tradition) Spring Latch

Contact Tail Length

A: 5.0mm-Pitch 4.3mm (Standard)
D: 4.3mm-Pitch 4.2mm (Standard)

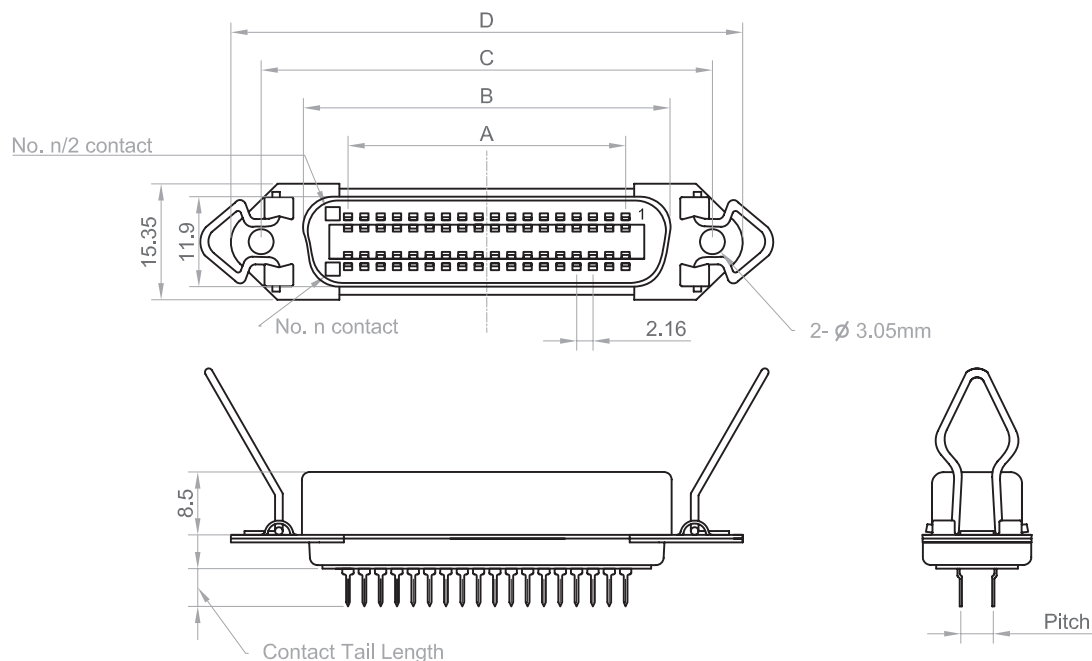
Shell Plating

A: Ni over Copper (Standard)

FEMALE PCB DIP LATCH TYPE

RoHS COMPLIANT

FU-YAO
TECHNOLOGY CO., LTD.



Unit : mm

Part number	contacts	A	B	C	D
RS4-36SB□A□5000	36	36.72	48.9	59.7	67.7
RS4-50SB□A□5000	50	51.84	64.1	74.9	82.8

R S 4 - 3 6 S B A A A 5 0 0 0

Number of Contact
36 . 50

Mating style
S: Receptacle / Female

Insulator Color
B: Blue (Standard)
K: Black

Contact Au Plating
A: Contact area Au(Flash) over Ni plating (Standard)
E: Contact area Au(15 μ in) over Ni plating
F: Contact area Au(30 μ in) over Ni plating

Back option

0: ψ 3.05mm (Standard)
A: Rivet 4.8mm Boardlock
E: Rivet 4.0mm Hexagon Nut (#4-40)
F: Rivet 3.0mm Hexagon Nut (#4-40)
M: Rivet 2.0mm Round Nut (#4-40)

Spring Latch type

5: With (NEW) Spring Latch (only 36 50)

Contact Tail Length

A: 5.0mm-Pitch 4.3mm (Standard)
D: 4.3mm-Pitch 4.2mm (Standard)

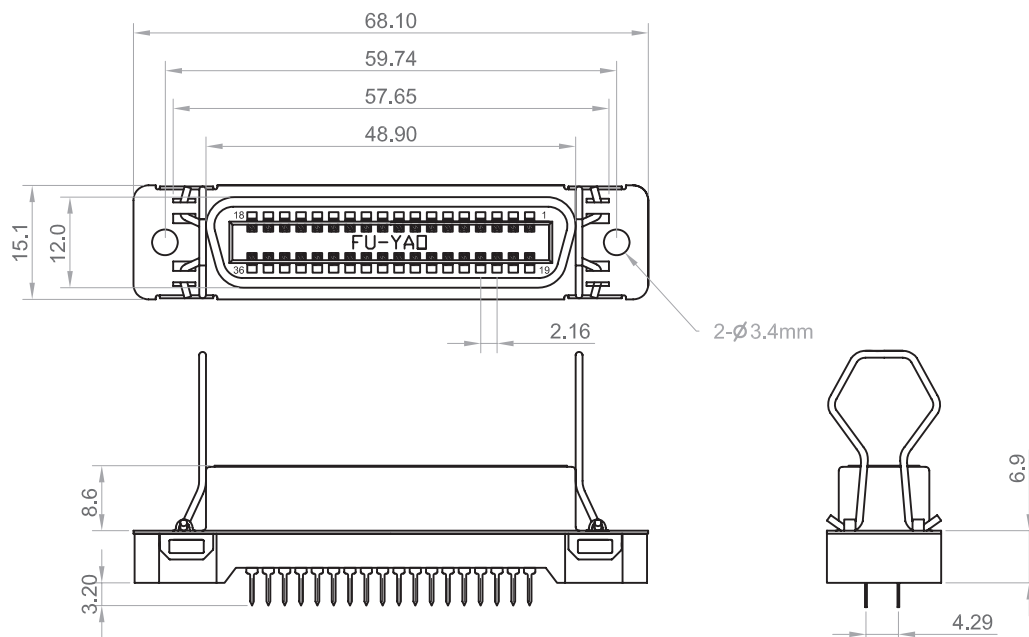
Shell Plating

A: Ni over Copper (Standard)

FEMALE PCB DIP LATCH TYPE

RoHS COMPLIANT

FU-YAO
TECHNOLOGY CO., LTD.



R S 6 - 3 6 S K A A B F 0 0 0

Number of Contact
36

Mating style
S: Receptacle / Female

Insulator Color
K: Black

Contact Au Plating
A: Contact area Au(Flash) over Ni plating (Standard)
E: Contact area Au(15 μ in) over Ni plating
F: Contact area Au(30 μ in) over Ni plating

Back option
0: ψ 3.05mm (Standard)
L: Rivet Board Lock and Lock screw (#4-40)
R: Rivet Board Lock (#4-40)

Spring Latch type
F: Lock Spring Latch (Standard)

Contact Tail Length
B: 3.2mm

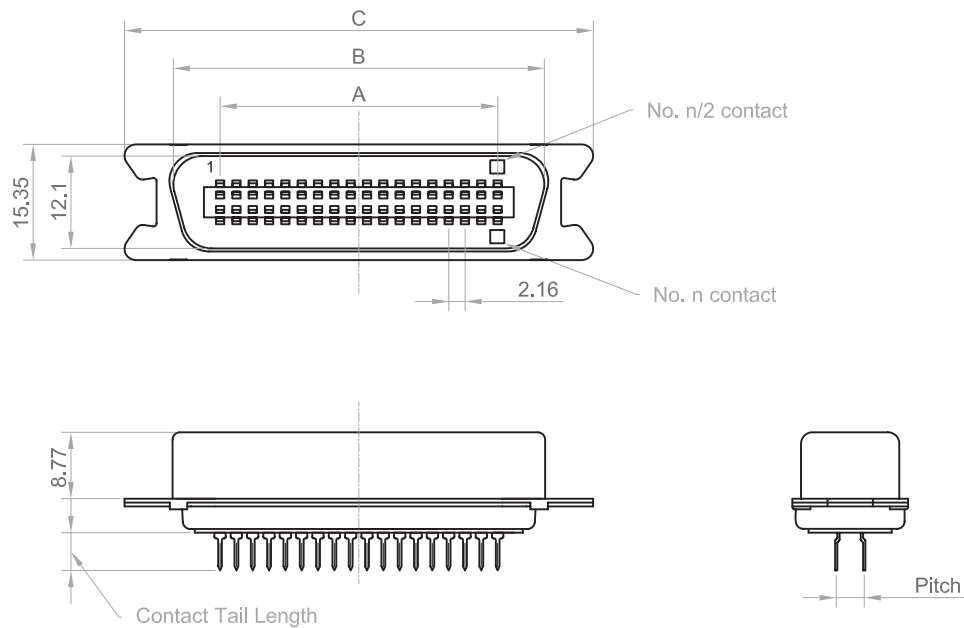
Shell Plating
A: Ni over Copper (Standard)

MALE PCB DIP LATCH TYPE

RoHS COMPLIANT

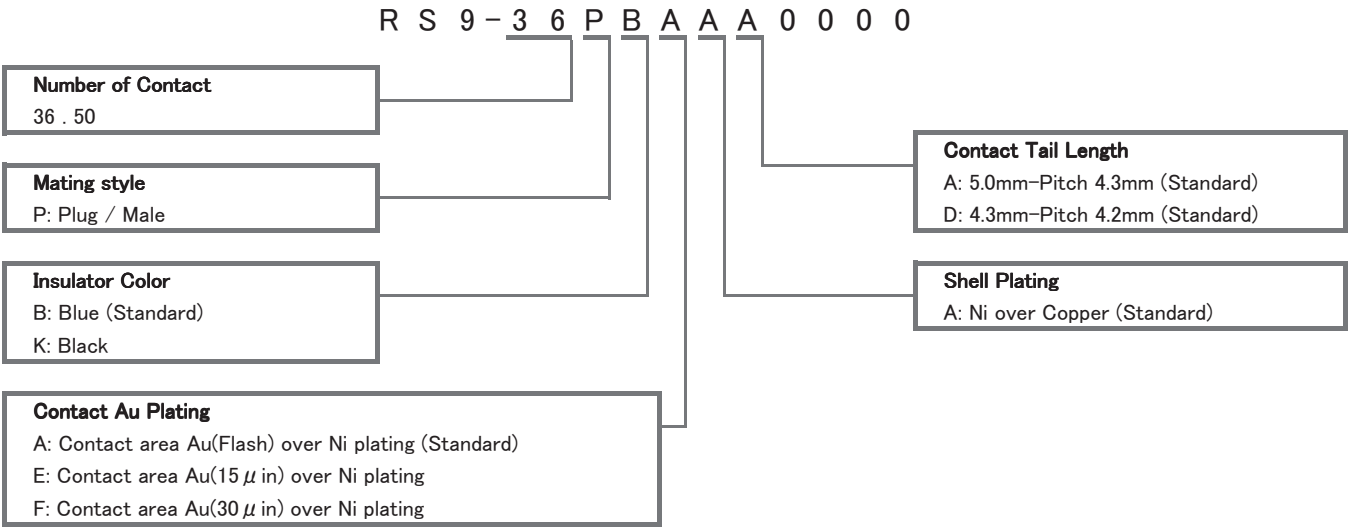
FU-YAO

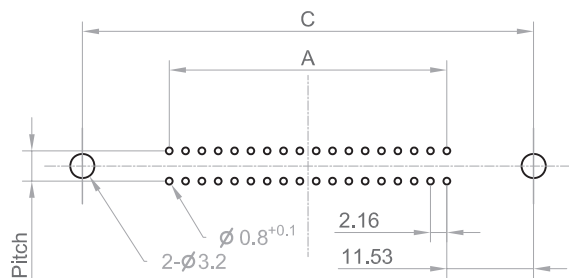
TECHNOLOGY CO., LTD.



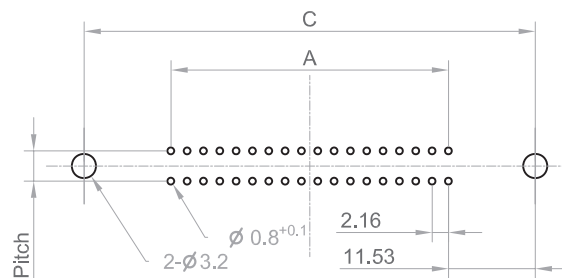
Unit : mm

Part number	contacts	A	B	C
RS9-36PB□A□0000	36	36.72	49.3	62.1
RS9-50PB□A□0000	50	51.84	64.4	77.4

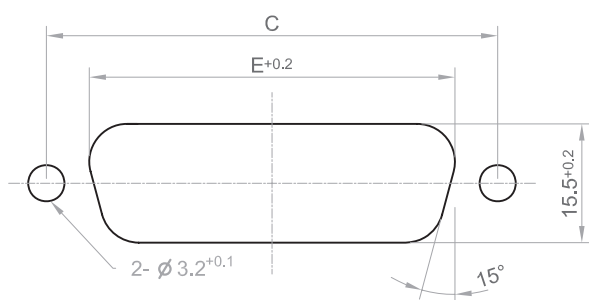




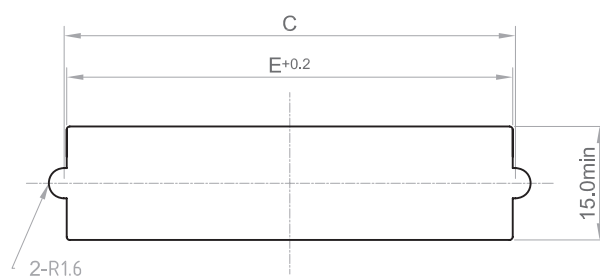
P.C.B. Mount Layout



P.C.B. Mount Layout



Panel Cut Layout



Panel Cut Layout

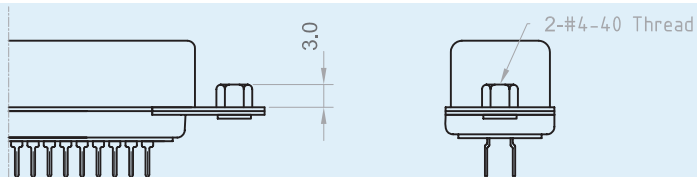
Unit : mm

Part number	contacts	A	C	E
RS1-14PB□A□0000	14	12.96	36.0	29.4
RS1-24PB□A□0000	24	23.76	46.8	40.1
RS1-36PB□A□0000	36	36.72	59.7	53.1
RS1-50PB□A□0000	50	51.84	74.9	68.2
RS2-14SB□A□0000	14	12.96	36.0	29.3
RS2-24SB□A□0000	24	23.76	46.8	40.1
RS2-36SB□A□0000	36	36.72	59.7	53.0
RS2-50SB□A□0000	50	51.84	74.9	68.2

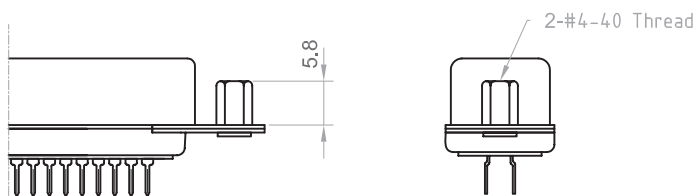
Unit : mm

Part number	contacts	A	C	E
RS4-14SB□A□2000	14	12.96	36.0	35.3
RS4-24SB□A□2000	24	23.76	46.8	46.1
RS4-36SB□A□2000	36	36.72	59.7	59.0
RS4-50SB□A□2000	50	51.84	74.9	74.2
RS4-36SB□A□5000	36	36.72	59.7	59.0
RS4-50SB□A□5000	50	51.84	74.9	74.2
RS6-36SK□ABF000	36	48.90	59.74	59.0

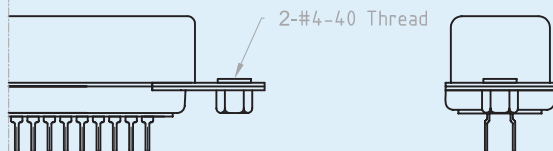
RS□-XX□B□AD0000



RS□-XX□B□AB0000

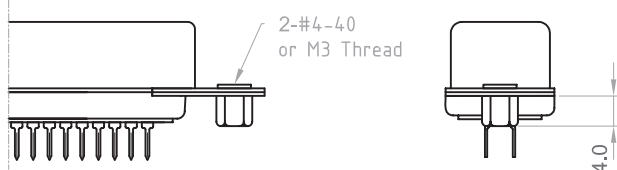


RS□-XX□B□A0F000

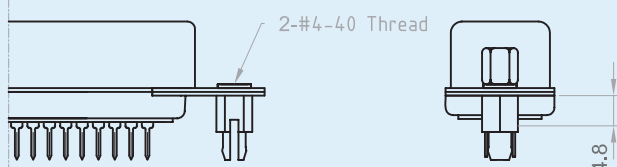


RS□-XX□B□A0E000 (#4-40)

RS□-XX□B□A0H000 (M3)



RS□-XX□B□A0A000



RS□-XX□B□AAA000

