

HIGH DENSITY DB P.C.B. DIP RIGHT ANGLE

FU-YAO TECHNOLOGY CO., LTD.



Material & finish

SHELL:
Steel
Nickel plated steel

PIN CONTACT:
Phosphor bronze
Gold plated

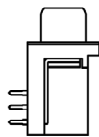
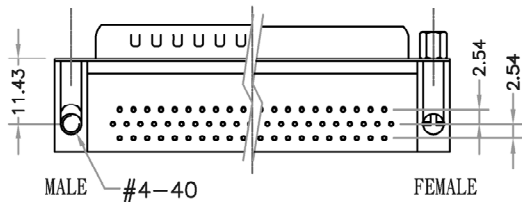
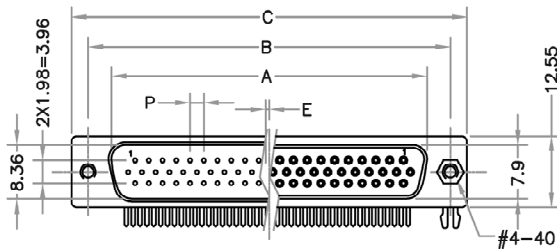
INSULATOR:
PBT & Glass-fibre reinforced UL 94-V0

CURRENT RATING:
5 Amp

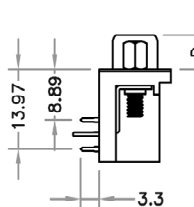
DIELECTRIC STRENGTH:
1000V for one minute

INSULATOR RESISTANCE:
1000MΩ Min.(at 500V DC)

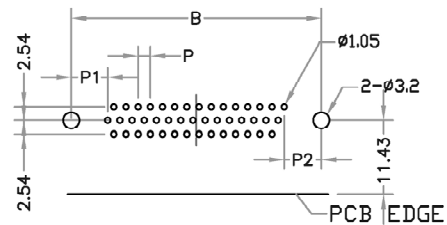
TEMPERATURE:
-55°C to +105°C



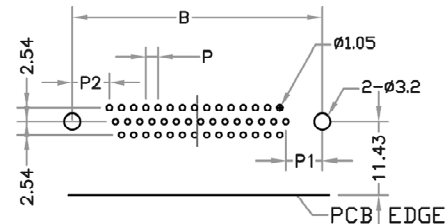
RIVET+L SHAPE



HEX SCREW LOCK+BOARDLOCK



MALE P. C. B. LAYOUT



FEMALE P. C. B. LAYOUT

MALE								
	A	B	C	D	E	P	P1	P2
15	16.92	24.99	30.81	6.0	0.25	2.29	7.04	7.64
26	25.25	33.32	39.14	6.0	0.25	2.29	6.88	6.97
44	38.96	47.04	53.04	6.0	0.25	2.29	6.88	6.95
62	55.42	63.50	69.32	6.0	0.31	2.41	7.00	7.09

FEMALE								
	A	B	C	D	E	P	P1	P2
15	16.33	24.99	30.81	5.8	0.25	2.29	7.04	7.64
26	24.66	33.32	39.20	5.8	0.25	2.29	6.88	6.97
44	38.38	47.04	53.05	5.8	0.25	2.29	6.88	6.95
62	54.84	63.50	69.40	5.8	0.31	2.41	7.00	7.09

ORDERING INFORMATION

HR1 - XX X X X X X X X X 0 0

TYPE
HR1: HIGH DENSITY
D-SUB R/A TYPE

No. OF CONTACTS
15
26
44
62
78

CONTACT TYPE
P: PLUG
S: SOCKET

INSULATOR COLOR
B: BLUE
K: BLACK

CONTACT PLATING
A: GOLD FLASH
E: 15u"
F: 30u"

SHELL PLATING
A: NICKEL
B: TIN

INSULATOR LENGTH
A: 8.89mm
B: 3.08mm
C: 5.08mm

GROUND TAB
A: L SHAPE
B: Z SHAPE

SPECIAL FUNCTION
A: 4.8mm HEX SCREW LOCK
D: 5.8mm HEX SCREW LOCK
E: 6.1mm HEX SCREW LOCK

SPECIAL FUNCTION
0: SCRW LOCK
A: RIVET (#4-40)

SPECIAL FUNCTION
A: W/H 4.8mm HEX SCREW