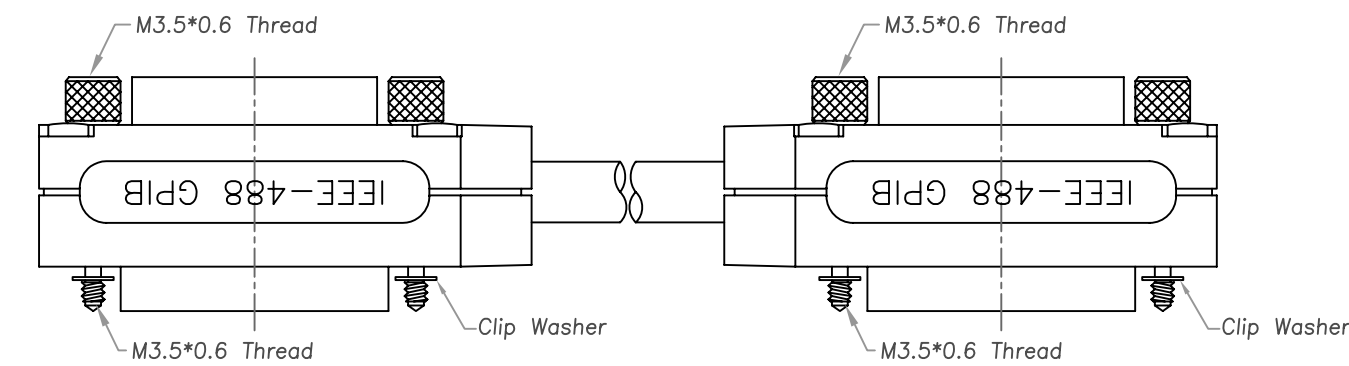
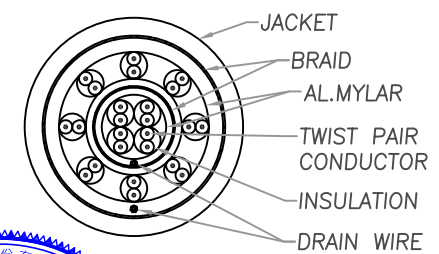
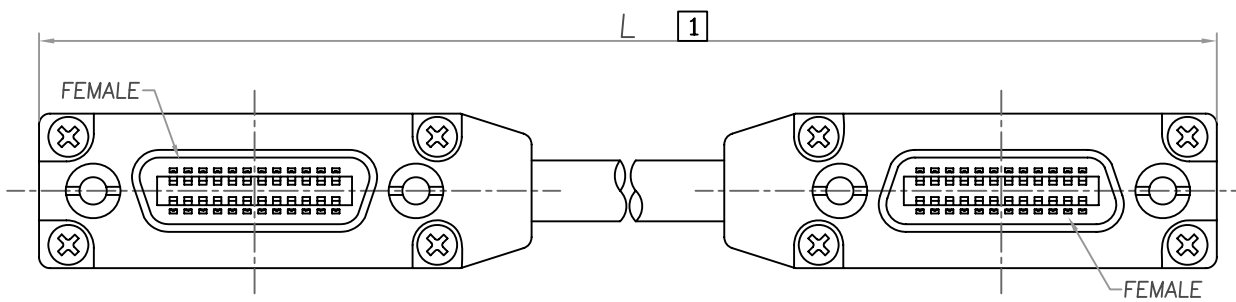


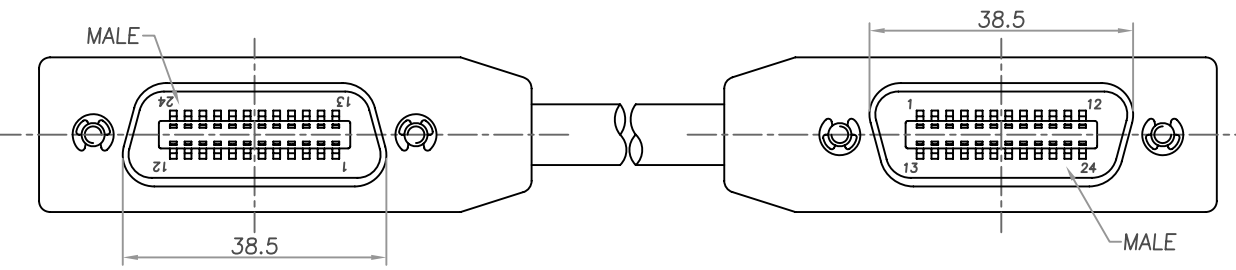
RoHS COMPLIANT

REV	DATE	DESCRIPTION
D	01/25/'19	#059-1 新鑄殼(公凸兩腳)配染黑螺絲裝E型環
E	06/29/'23	#124 更正PIN12、24接點接地 Apply: Alan



Material & Finish

- HOOD:**
ZINE ALLOY
NICKEL PLATED ASSEMBLY
- INSULATOR:**
PBT & GLASS-FIBRE REINFORCED
UL 94V-0 BLACK
- PIN CONTACT:**
PHOSPHOR BRONZE
GOLD FLASH PLATED
- THUMBSCREW:**
FREE CUTTING STEEL
BLACK OXIDE FINISH
- CLIP WASHER:**
STEEL, NICKEL PLATED
- SCREW:**
STEEL, NICKEL PLATED
- 24 CONDUCTOR CABLE:**
UL2464 26# (IEEE-488) BRAIDED
TWIST COMPUTER CABLE



備註: 接點、公差表如第2頁

SHEET:1/2

CABLE LENGTH | UNIT
A:mm B:m C:inch
D:feet E:cm

FU-YAO TECHNOLOGY CO., LTD.
復堯科技股份有限公司

MODEL NAME:
IEEE-488 GPIB CABLE ASSEMBLY

MARK EXPLAIN:
⚠:Revision Change
①:Important Dimension
①:Note

TOLERANCE:
0.00:
0.00 : ±0.20
0.0 : ±0.30
0. : ±0.40
ANGLE: ±3.0°
UNIT: mm

PART NO. CAE1E1-01BMGGETC2
APPROVED BY: ARISA
CHECKED BY: ALAN
DRAW BY: ALAN

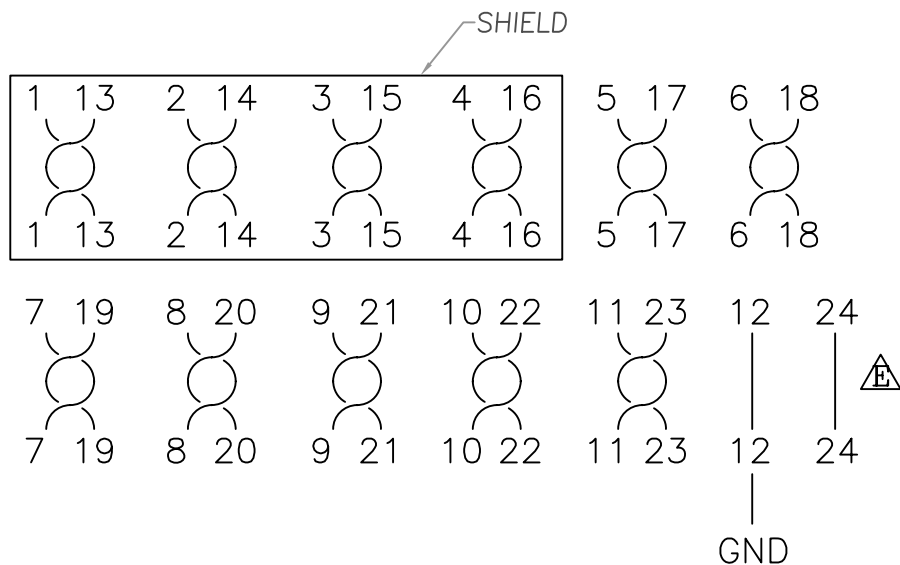
FILE NO.FIG01606
SCALE: 1/1
DATE : 950322

RoHS COMPLIANT

REV	DATE	DESCRIPTION	
D	01/25/'19	#059-1	新鑄殼(公凸兩腳)配染黑螺絲裝E型環
E	06/29/'23	#124	更正PIN12、24接點接地 Apply: Alan



PIN ASSIGNMENT



L (mm)	Tolerance
500-1000	±60
1001-5000	±100
>5001	±200

SHEET:2/2

CABLE LENGTH | UNIT
 A:mm B:m C:inch
 D:feet E:cm

FU-YAO TECHNOLOGY CO., LTD. 復堯科技股份有限公司	MODEL NAME: IEEE-488 GPIB CABLE ASSEMBLY	MARK EXPLAIN: ⚠:Revision Change ①:Important Dimension ②:Note	TOLERANCE: 0.000: ±0.20 0.00 : ±0.30 0. : ±0.40 ANGLE: ±3.0° UNIT: mm	PART NO. CAE1E1-01BMGGETC2
				APPROVED BY: ARISA CHECKED BY: ALAN DRAW BY: ALAN
				FILE NO. FIGO1606 SCALE: 1/1 DATE: 950322